



Silently Powering Your World

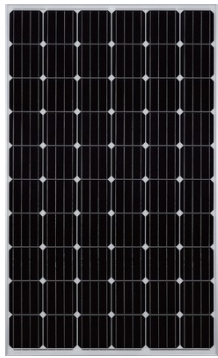
Backup Power Function Introduction



AGENDA

1. SOLUTION
2. SCHEMATIC
3. FEATURES
4. SPECIFICATION
5. SETTINGS
6. MONITOR

SOLUTION



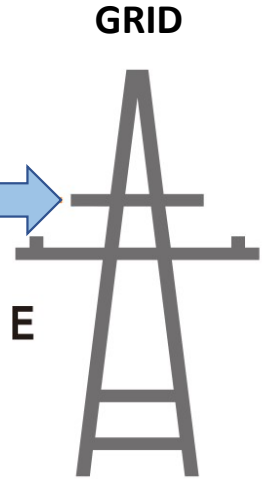
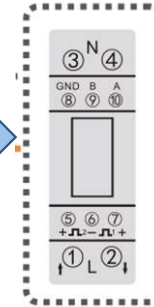
Solar Power: 8kW



Battery: 0-20kWh

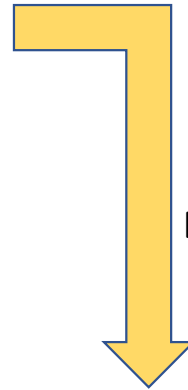


Smart Meter Or CT Clamp

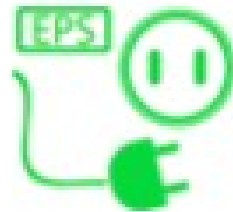


GRID

E



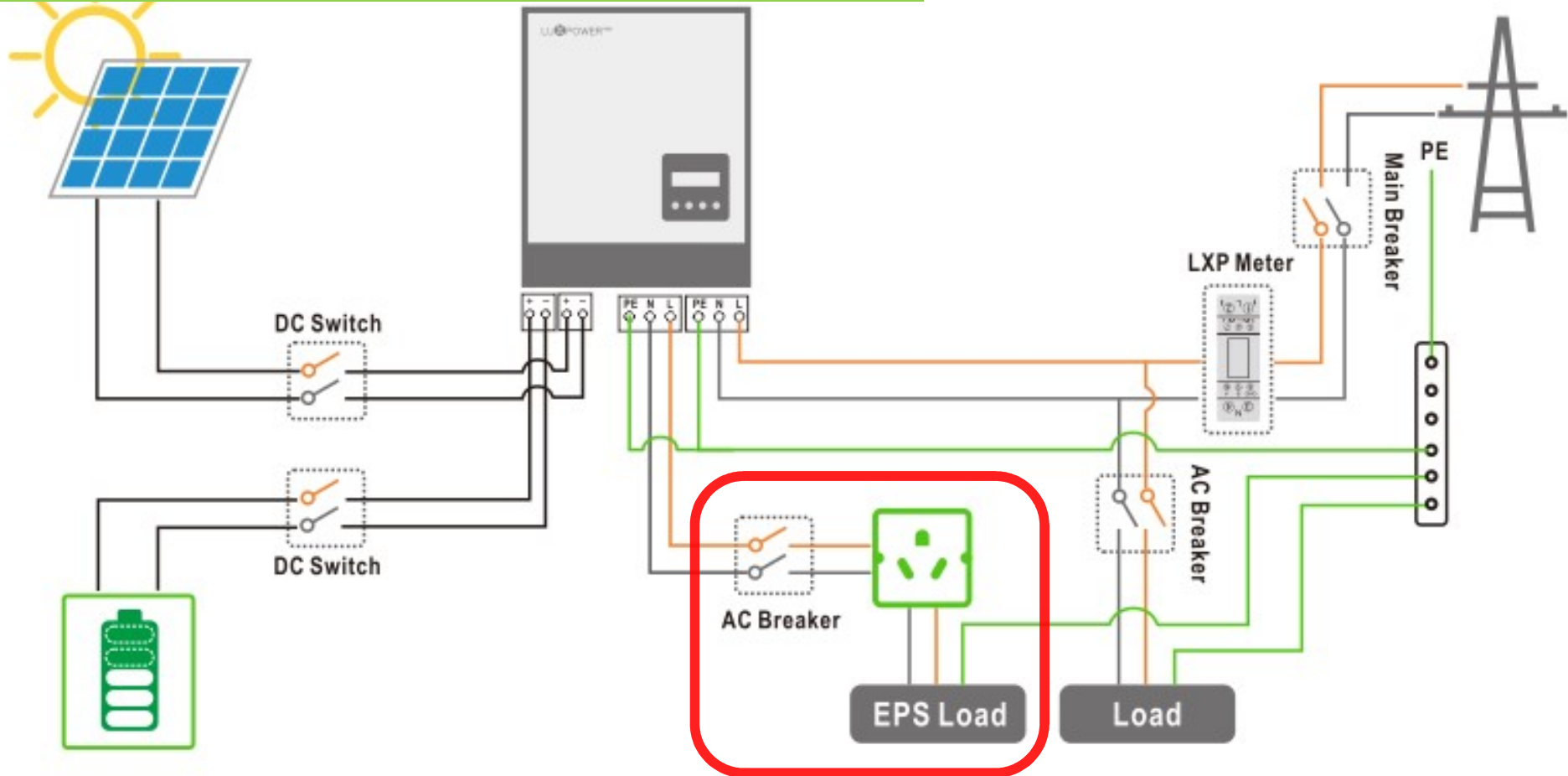
EPS Load



Normal Load

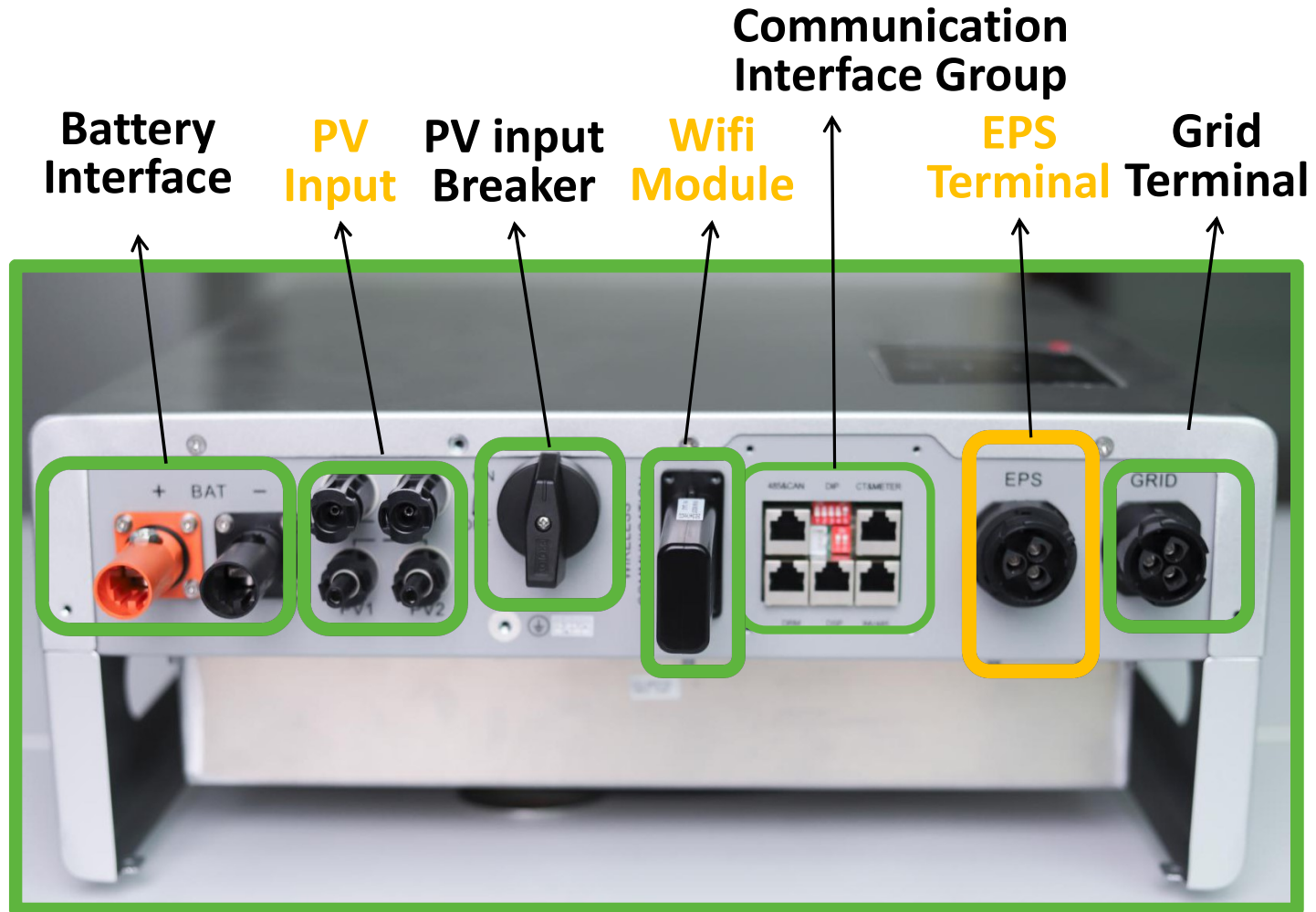


SCHEMATIC



No External Box or Controller, EASY! ! !

SCHEMATIC---INTERFACE



LXP |

FEATURES--EASY TO INSTALL

- Integrated backup function, do not need any accessories
- All fast install terminals
- Easy online settings for backup function



LXP |

FEATURES--Flexible for paralleling

- Support single phase backup power paralleling function, 10 pcs max
- Support three phase backup power paralleling function, can be different quantity in different phase



SPECIFICATION

Specification of Power Backup

Parameter	LXP-5K Hybrid
Battery Input	40-60V
Max Discharge Current	80A, 40minutes For Hardware Version 1.0 continuously 80A For Hardware Version 2.0
Max Charge Current	80A, 40minutes For Hardware Version 1.0 continuously 80A For Hardware Version 2.0
Max Output Backup Power(Without Solar)	4000W
Max Output Backup Power(With Solar)	5000W
Switch Time	Auto Seamless Swith, Typical 10ms
Parallel for Backup	Support 10pcs paralleling

SETTINGS

Settings about power backup function

SETTINGS	Explanation
Power Backup Enable/Disable	If customer want to have backup power when grid interrupted, then enable backup function, this function should be set in standby mode
Seamless EPS Switching Enable/Disable	When enabled, the switch time is about 10ms when grid interrupted, do not recommend to enable if the grid frequency is not stable
PV Grid Off Enable/Disable	when enabled, system will go to offgrid mode even though there is no battery in the system, at this time, power is supplied by solar, so it may not stable
Off-grid Discharge Cut-off SOC	When battery level is lower than this setting, inverter will stop discharging and exist off grid mode
Discharge Cut-off Voltage	For lead acid battery, if battery voltage is lower than this setting, inverter will stop discharging and exist off grid mode

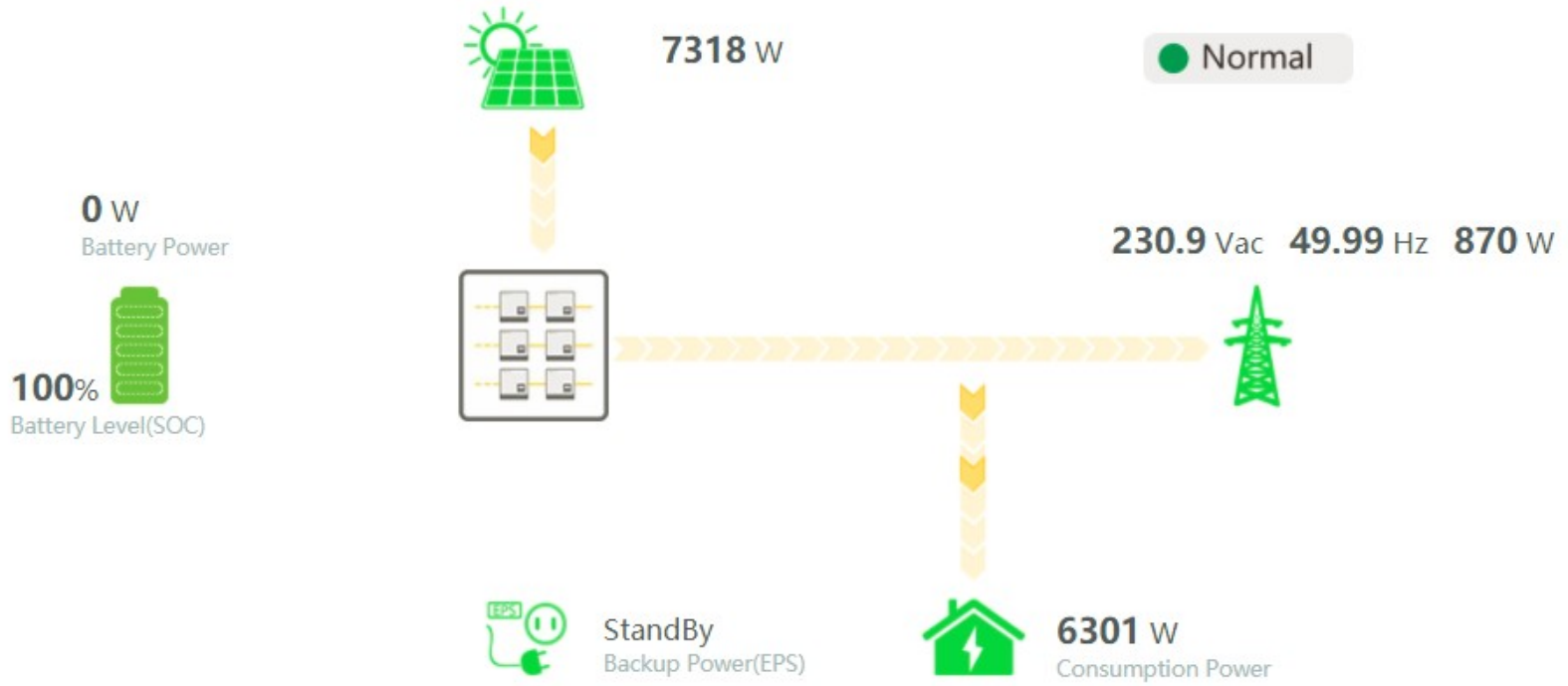
MONITOR

The screenshot displays the LXP Monitor web interface. The top navigation bar includes 'Monitor', 'Data', 'Configuration', 'Overview' (highlighted), and 'Maintain'. The 'Overview' tab shows a 'Station Overview' with a 'StartLine' dropdown and 'All Status' filter. A 'Device Overview' table lists 8 inverters with columns for Serial number, Status, and Solar power. A 'Parallel' dialog box is open, showing configuration for serial number 9382004006, with a dropdown for 'Parallel Group' set to 'A' and a text input for 'Parallel Index' set to '1'. The dialog has 'Save', 'Clear', and 'Cancel' buttons. In the background table, the 'Action' column for the first row is highlighted with a 'Parallel' button.

Serial number	Status	Solar	Energy	ConsumptionE	Plant name	Parallel	Action
1 9382004006	✓ Normal	38 W	kWh	1385.1 kWh	StartLine	A-1	Parallel
2 9382004013	✓ Normal	2 kW	kWh	5158.3 kWh	StartLine	A-2	Parallel
3 9382004051	✓ Normal	2 kW	kWh	5241.7 kWh	StartLine	A-3	Parallel
4 9382004063	✓ Normal	2 kW	kWh	5169.3 kWh	StartLine	A-4	Parallel
5 9382004029	⚠ Notice	0 W	Wh	265.5 kWh	StartLine	B-1	Parallel
6 9382004057	⚠ Notice	14 W	Wh	737.1 kWh	StartLine	B-2	Parallel
7 9382004025	✓ Normal	0 W	Wh	705.5 kWh	StartLine	C-1	Parallel
8 9192001003	✓ Normal	0 W	Wh	631.5 kWh	StartLine	C-2	Parallel

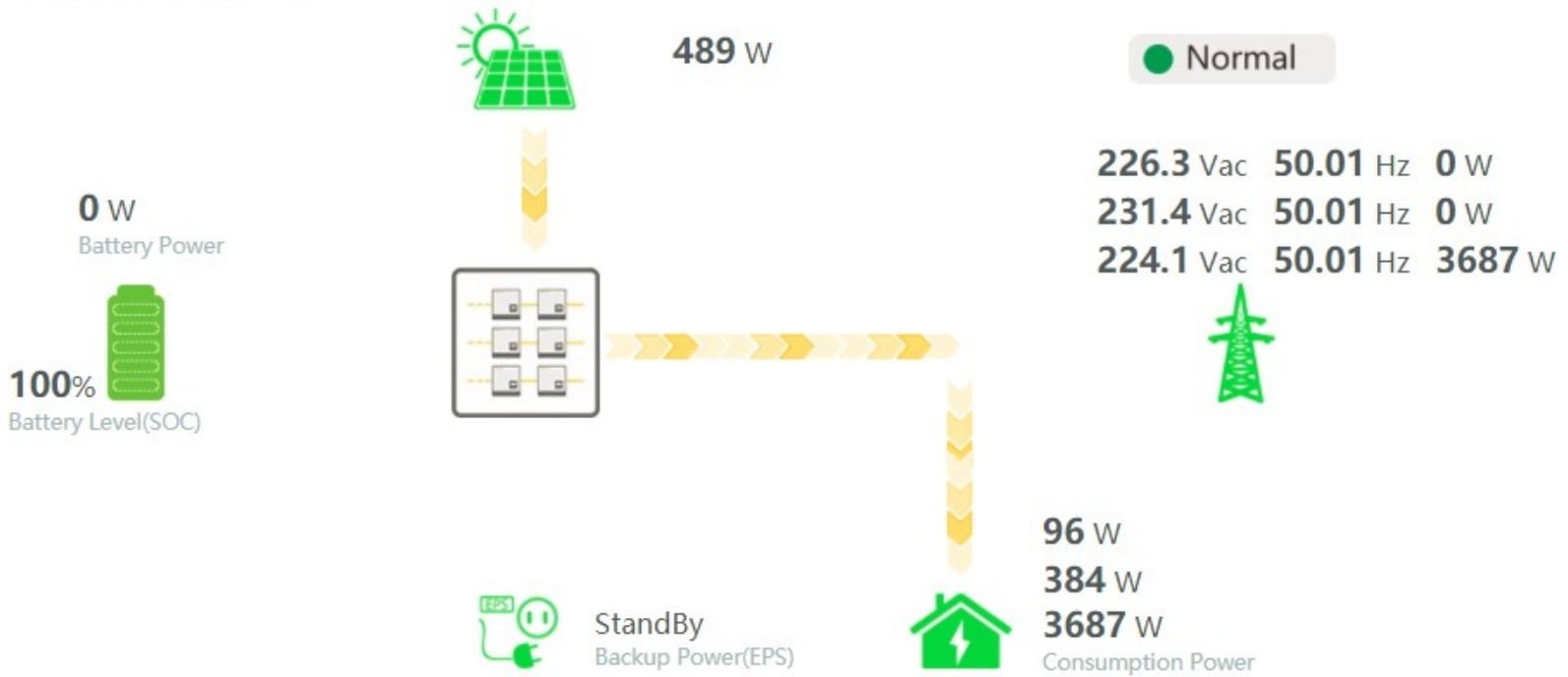
MONITOR--single phase

Realtime System Information



MONITOR--three phase

Realtime System Information



Keep in Touch

“

Where sun shined

Power always on!

”

E-mail info@luxpowertek.com

Telephone +86 755 8572 9056

Website www.luxpowertek.com

Address Shenzhen, China