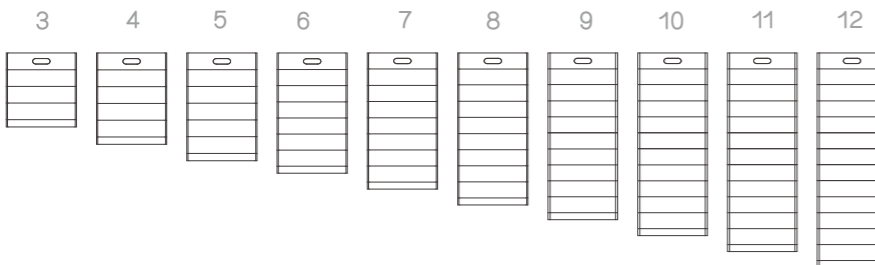


## SPECIFICATION

Model	HOME-ESS-HV-5.12K
Nominal Energy	15.36kWh-61.44kWh
Nominal Voltage	153.6V-614.4V
Cell Type	LFP(LiFePO <sub>4</sub> )
Charging Temperature	From -5 to 55° C
Discharging Temperature	From -20 to 55° C
Depth of Discharge	95% DOD
Nominal Charge/Discharge Current	100A
Max. Charge/Discharge Current	100A
Cycle Life	>6000,25° C
Enclosure Protection Rating	IP65
Max. Battery Module per System	12
Cooling Type	Natural convection
Humidity	5%-95%
Altitude	<2000
Warranty	10 years
Communication	CAN/RS485/WIFI/Bluetooth
Battery Safety	IEC 62619/IEC 62477/CE
Transportation Certification	UN38.3



**HOME-ESS-HV-5.12K** is suitable for any existing solar energy system without connected solar energy storage batteries. It offers flexibility with **3 to 12 modules** that can be combined, supporting up to **4 parallel clusters** and a maximum expansion of **245.76kWh**.



Jiangsu Hanchu Energy Technology Co., LTD

- info@hanchuess.com
- 0086-510-88865288
- www.hanchuess.com
- No.9 Huicheng Road, Huishan District, 214177, Wuxi, Jiangsu, China

# HOME-ESS-HV-5.12K

## 15.36-245.76<sub>kWh</sub>

### High Voltage Battery

**46Kg**  
Module Weight

**100A**  
Max. Charge/Discharge Current

**95%**  
DOD

**IP65**  
IP Rating of Enclosure



# Hanchu Cloud Platform Integration

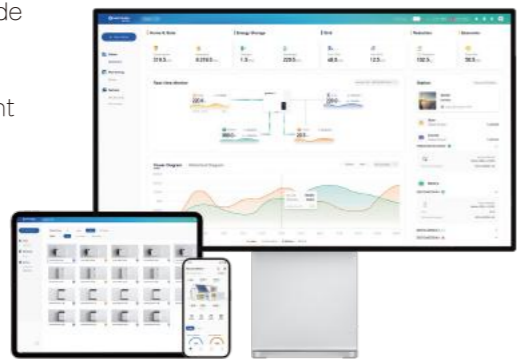


## • Schematic

Through integration with the **HANCHU iESS**, the energy storage system enables real-time monitoring of battery performance, charge-discharge status, temperature, and other data. You can conveniently access and control your energy storage system in real-time through a mobile application or webpage, enhancing the overall visual management experience of the system.

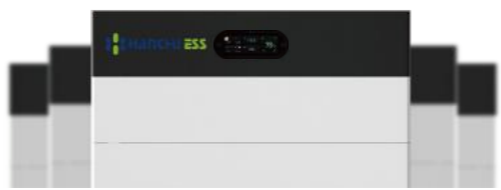
Operators and end-users can stay informed about the real-time operational status of the system, enabling remote scheduling, OTA upgrades, and historical data analysis. This functionality brings convenience to after-sales service.

- Fast configuration via APP/Platform
- 3 mins OTA Remote Upgrade
- 7/24 real-time monitoring
- Remote Energy Management



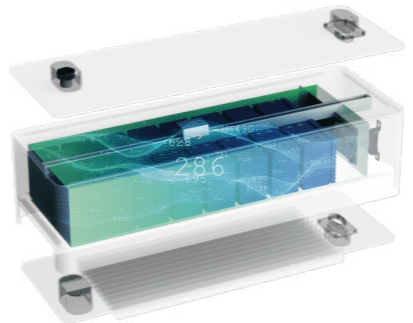
# Product Features

## Intuitive Interaction



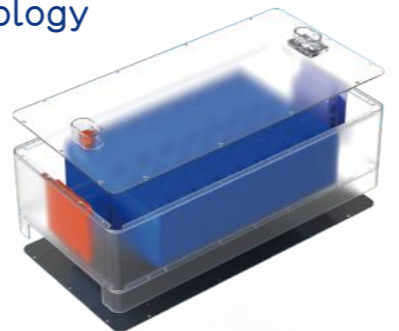
- Through the industry-leading touch screen display, not only real-time display of battery operation data, but also on-screen operations such as setting parameters, giving users a better human-computer interaction experience.

## Superior Performance



- More Lighter
- More Energy
- Greater Performance

## Leading Technology



- Fully Aluminum Extruded Integrated Body
- Smart Management
- Improved Heat Dissipation Structure
- IP65 Protection Rating

# Product Features

## Ultimate Security



- Smart BMS
- Thermal Aerosol
- External Circuit Breaker
- LFP Cell
- Explosion-proof Valve

## Convenient Installation



- Modular Design
- Quick Plug Installation
- Bluetooth Networking
- 30-second Fast Matching Network