



HOME-ESS-HV-5.12K

INNOVATE · ENJOY

Smart energy, Sustainable Solutions.

Technical Parameter

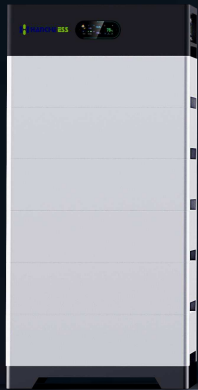
- **Model**
HOME-ESS-HV-5.12K
- **Nominal Voltage**
153.6V-614.4V
- **Nominal Charge/Discharge Current**
50A
- **Communication Port**
CAN/RS485/WIFI/Bluetooth
- **Enclosure Protection Rating**
IP65
- **Nominal Energy**
15.36kWh-61.44kWh
- **Cell Type**
LFP(LiFePO4)
- **Max. Charge/Discharge Current**
100A
- **Depth of Discharge**
95%
- **Certifications**
IEC 62619/IEC 62477/CE



Key Features

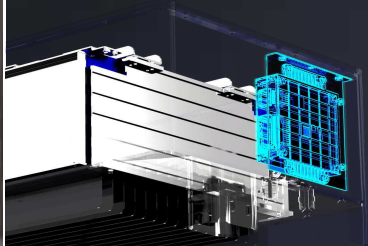
Superior Performance

- More Energy.
- Greater Performance.



Leading Tecnology

- Fully Aluminum Extruded Integrated Structure.
- BMS.
- Improved heat dissipation structure.



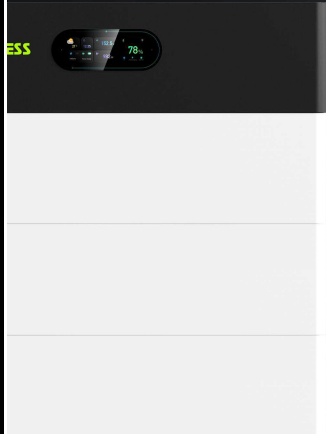
Ultimate Security

- Smart BMS.
- Thermal Aerosol.
- LFP Cell.
- External circuit breaker.



Intuitive Interaction

- Touchable Display.



Intelligent Platform

- 3 mins OTA Remote Upgrade.
- 7/24 real-time monitoring.
- Fast configuration via APP/Platform.
- Remote Energy Management.

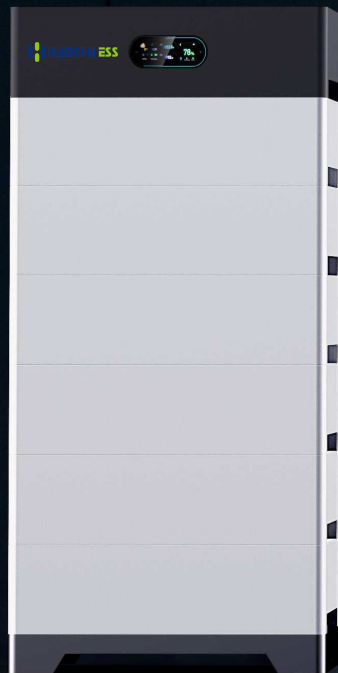


Convenient Installation

- Modular Design.
- Quick Plug Installation.
- Bluetooth Networking.



HANCHU ESS



More efficient

- Energy density up to **111.3Wh/kg**, it delivers more energy with less weight.

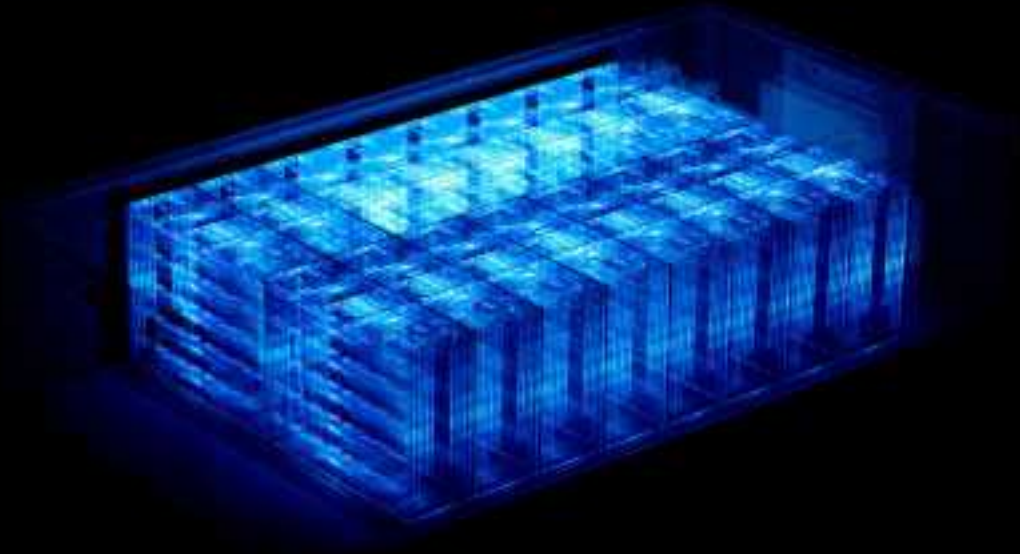
More Energy

- Stackable **3-12 modules** per cluster, supports **4 clusters** in parallel.
- Higher **DOD (95%)** for more usable energy.



Greater Performance

- Max charging and discharging current up to **100A**.
- The **100Ah** cell can provide more power.
- The leading **full-time equalisation**.



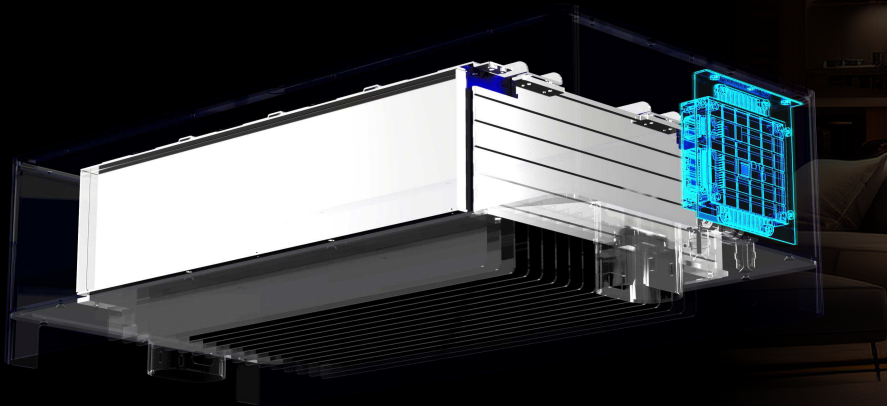
Improved Heat Dissipation Structure

- Enhances heat dissipation performance.
- lowers temperature.
- Extends battery lifespan.



Smart Management

- Short-circuit Protection.
- Over-charge Voltage Protection.
- Over-discharge Voltage Protection.
- Under-voltage Protection.
- Over-temperature Protection.
- Voltage Detection.
- Current Detection.
- Temperature Detection.



Fully Aluminum Extruded Integrated Structure

- The lightweight design of the compact battery housing reduces the overall weight.
- Higher strength and rigidity for improved product durability.



Ultimate Security

External Circuit Breaker

Quickly cuts off the current when necessary, increasing system safety and facilitating maintenance and emergency response.

LFP Cell

High safety, long life and excellent stability, high charge/discharge depth, low self-discharge rate and adaptability to high-temperature environments ensure long-cycle use and efficient energy storage.

Explosion-proof Valve

Prevent battery overheating, maintain battery stability, and reduce the likelihood of explosion.

Smart BMS

Intelligent monitoring and management to improve system performance and security.

Thermal Aerosol

Provides efficient fire protection to improve the safety of the battery system.

Radiator Backplane

Improve thermal performance, enhance system stability and extend battery life.

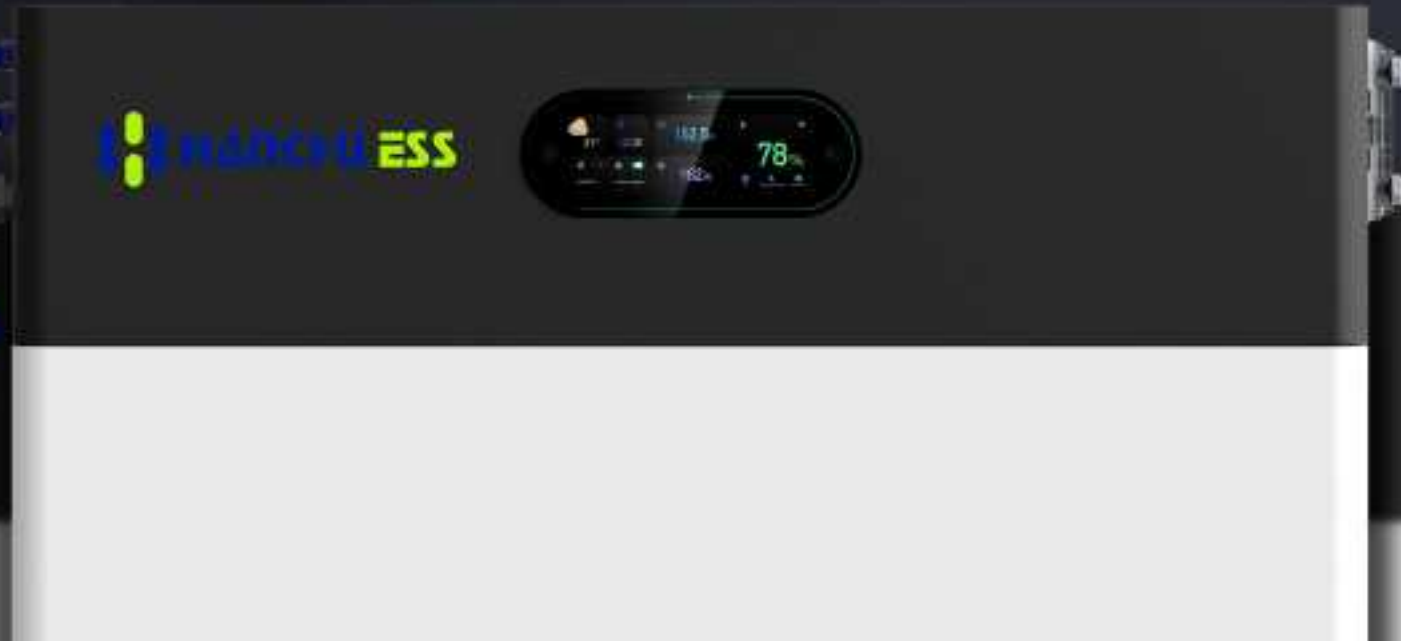
Quick Plug Installation

- **15-minute** stacking installation.
- Eliminating manual wiring process.
- **2-minute** wiring completion.



Intuitive Interaction

Through the **industry-leading touch** screen display, not only real-time display of battery operation data, but also on-screen operations such as setting parameters.



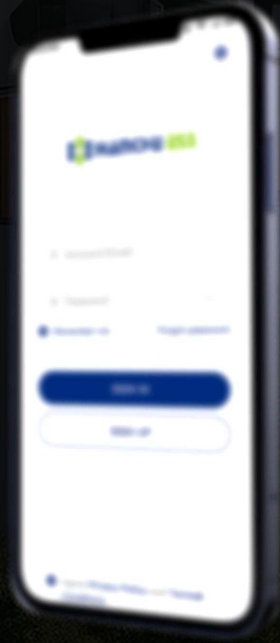
Portable Installation

- **Intelligent Automatically Addressing**

Automatically assigns master and slave addresses, eliminates manual dialling, avoids dialling errors and saves installation time.

- **30-second Fast Matching Network**

Batteries can be quickly networked, bound to APP and cloud platform, can easily achieve real-time battery monitoring and settings.



Cloud&APP

- 3 mins OTA Remote Upgrade
- 7/24 real-time monitoring
- Fast configuration via APP/Platform
- Remote Energy Management

By connecting to the iESS, end-users can monitor and control their energy storage systems and analyse historical data in real time via mobile apps or web pages, which enhances the user's experience of visual management of the system, and at the same time brings convenience for after-sales.

THANK YOU

Jiangsu Hanchu Energy Technology Co. Ltd.